

## TrekAce® LEADER



### Advantages

- **Controlling your team** with an easy to use Android application.
- **Real-time full view of team** / team members' location in multi story settings.
- **Easy planning** and debriefing capabilities.
- **Complete tactical solution on one application:** maps / comms / planning tools / location in 2D&3D.
- **Custom adaptation availability** for client's micro-tactical needs.
- **Intuitive, dynamic, interactive easy to use app.**
- **Very short training time.**
- **Provides a full view of the operation** and supports the commander during decision making.
- **TRL 8**

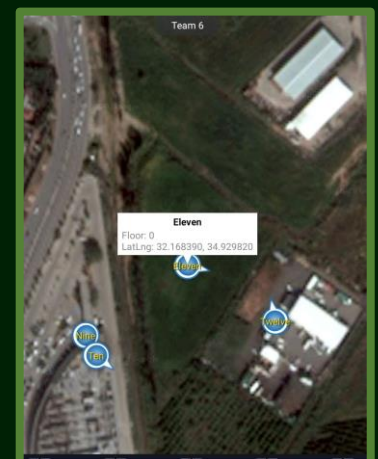
### Features

- **Team / Team member location** by coordinates and by floors.
- **Allows the use of user's maps** (converted to MB-Tiles format).
- **Features "hotspot" point location** – sending the operators to a single point in the perimeter using tactile with no need for voice/visual directions.
- **Sending tactical stealthy commands** to all operators through tactile.
- **Showing the operators' direction of sight** (where each of them is looking at).
- **Creating a "Safe Zone"** for the team in stationary position (prevents kidnapping).
- **Allows user level commands configurations.**



### Operational gap and solutions

- **Shows location and active direction-of-sight** in every GPS denied environment (Inaccurate GPS/Urban/Dense Vegetation/SUB-T/Extreme Weather).
- **Eliminating the threat from jamming/spoofing.**
- **Increases situational awareness** on the team level.
- **Emergency navigation to an extraction point**, without the need to know the direction or route in advance.



## TrekAce® LEADER

### Adaptation & Integration Possibilities

- **System can be adapted to existing in-unit communication** system (depends on the protocol).
- **System can be integrated to legacy communication** - C<sup>2</sup> / C4I systems or equivalent, by providing an SDK for easy integration.
- **System can be adapted to any “future soldier” systems** purchased by the military – no need to buy new technologies every time we change platforms.
- **The company is willing to consider cooperation with other companies** in related to the military needs!

### Technology

- **System relies on TrekAce® SOUL and 3D / Advanced** for connectivity and location.
- **The system requires connectivity to communication protocol** to transmit data from end users to management application (most basic solution is built in Bluetooth mesh).
- **The system can be upgraded, to transmit video/pictures, through the end user's Android camera**, if supported with the adequate communication solution.

### **All Applications enhance situational awareness combined with TrekAce® Core Ergonomic Wearable tactile ROBOTIC sleeve**

#### Advantages

- **Patented location** on the upper arm for maximum comfort, full functioning operational uses.
- **Transforming voice/touch into tactile commands.**
- **Patented and unique way of communication** (easy to learn and language).
- **Fast communication** - reduces the amount of time it takes for a command to reach all the team's operators.
- **Easy language to learn, very intuitive** - Decreases the time it takes for operators to understand the command given.

